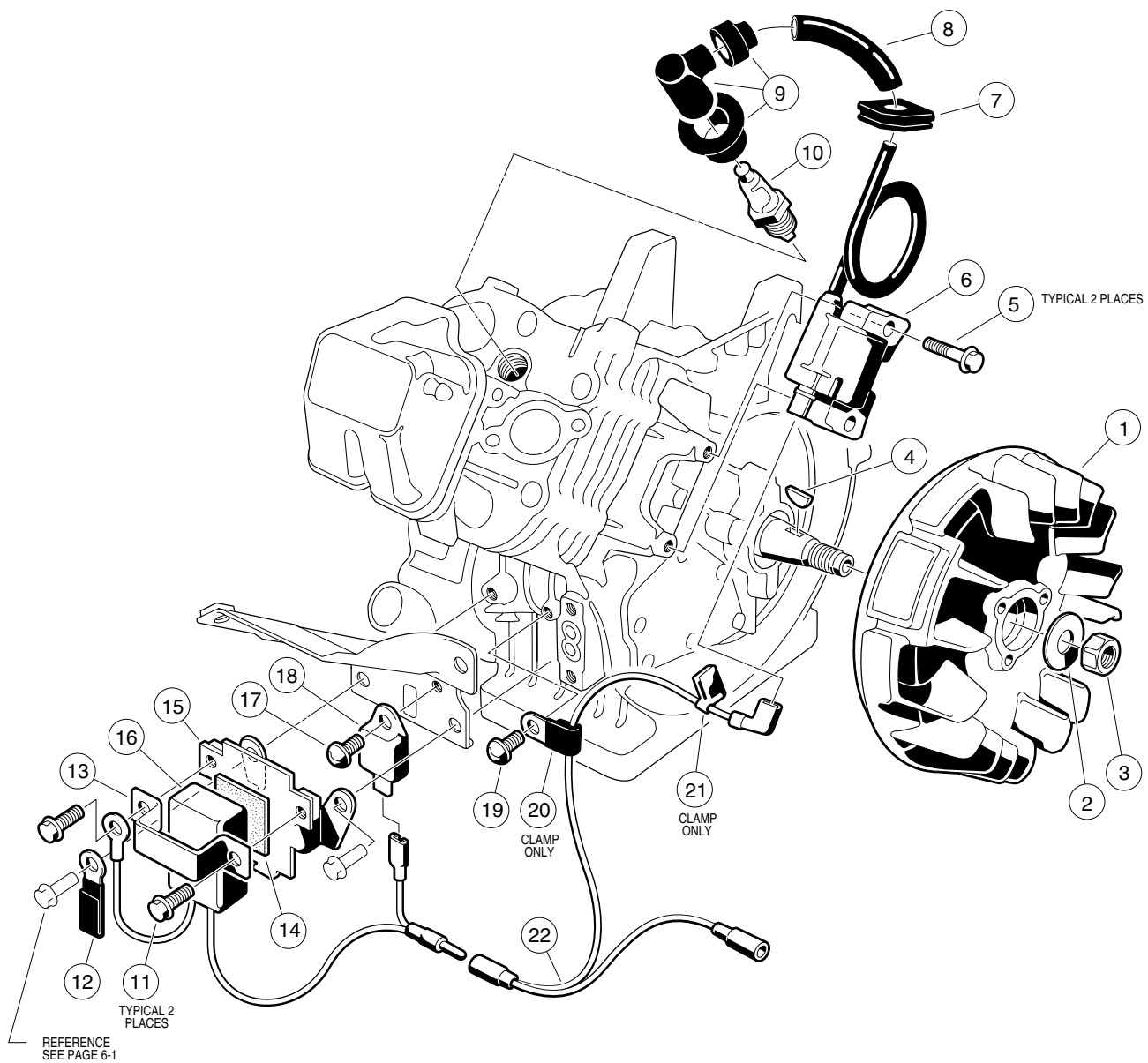


ENGINE

ITEM	PART NO.	DESCRIPTION	QTY
		1 2 3 4	
	1015731	FE 290 OHV GASOLINE ENGINE - COMPLETE	1
1	1016507	BOLT, 2-ENDED, M6 x 1 x 29MM	1
2	1016512	WASHER, FLAT, 6MM.....	1
3	1016524	SHROUD, ENGINE FE 290.....	1
4	1016456	BOLT, FLANGED, M6 x 1 x 12MM	17
5	1016534	HOUSING, FAN	1
6	1016531	DIPSTICK, FE 290.....	1
7	1017221	SCREW, 2-ENDED, M6 x 1 x 46MM.....	1
8	1016526	SHROUD, ENGINE, FE 290.....	1
9	1016525	SHROUD, ENGINE, FE 290.....	1
10	1016443	BRACKET	1
11	1016547	NUT, M6 x 1.....	1
12	1016539	O-RING	1
13	1016536	TUBE, OIL FILLER, FE 290.....	1
14	1015969	SCREW, PAN HEAD, M6 x 1 x 14MM	4
15	1015649	SHROUD, FAN.....	1
16	1015332	WIRE ASSEMBLY, GROUND	1

G

6

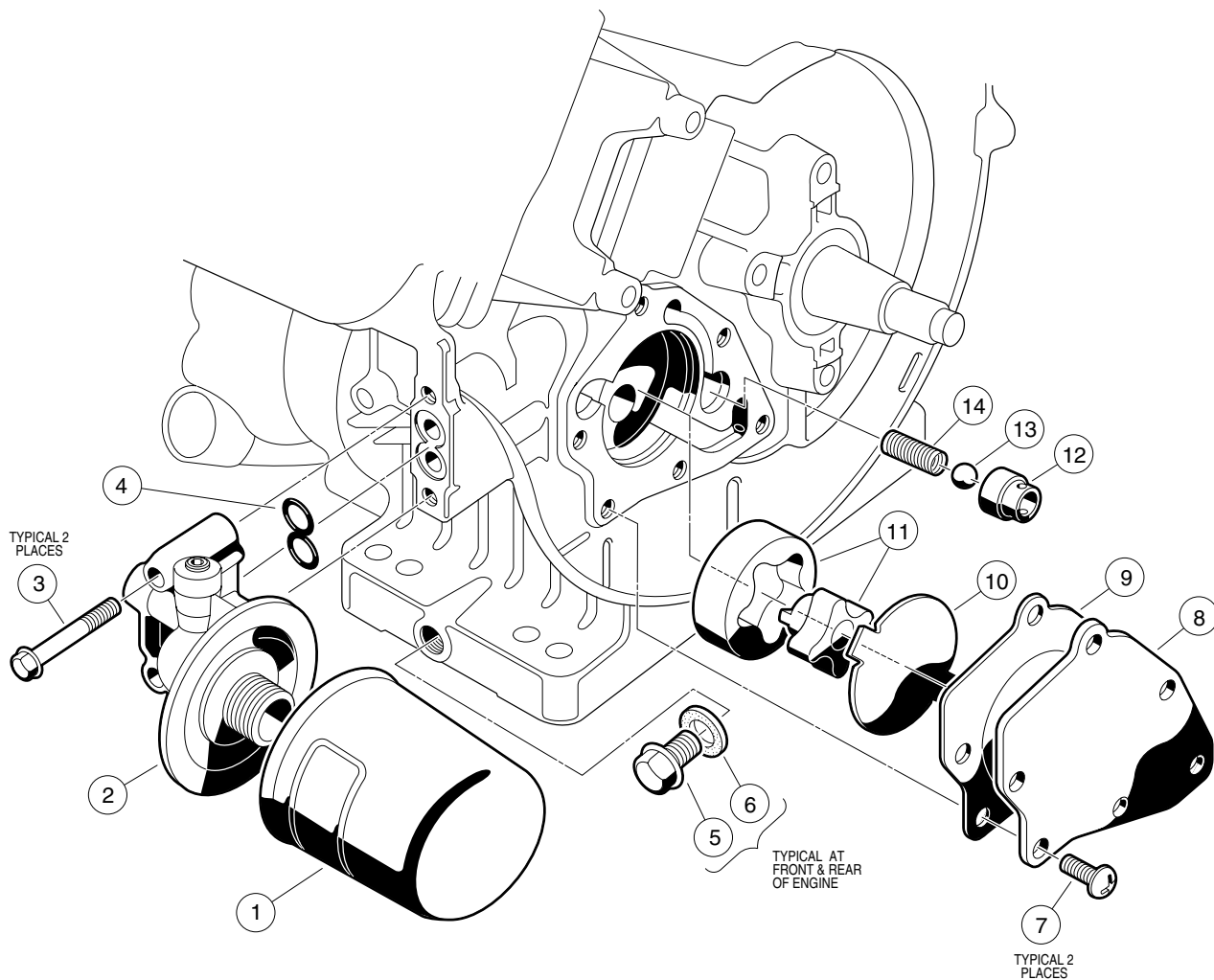


ENGINE

ITEM	PART NO.	DESCRIPTION	QTY
		1 2 3 4	
1	1016495	FLYWHEEL, COMPLETE	1
2	1016548	WASHER, FLAT, 16MM	1
3	1016505	NUT, HEX M16 x 2.....	1
4	1016562	KEY.....	1
5	1016455	BOLT, FLANGED, M5 x .8 x 25MM	2
6	1016492	COIL, IGNITION	1
7	1016578	GROMMET.....	1
8	1016588	TUBE, 7MM x 70MM	1
9	1016493	ASSEMBLY, PLUG CAP	1
10	1016111	SPARK PLUG - OHV	1
11	1016456	BOLT, FLANGED, M6 x 1 x 12MM	2
12	1012981	CLAMP.....	1
13	1016579	MOUNT, RPM LIMITER	1
14	1016586	DAMPER, RPM LIMITER	1
15	1016445	BRACKET, RPM LIMITER	1
16	1016511	LIMITER, RPM - OHV	1
17	1016497	SCREW, CROSS PAN HEAD, M5 x .8 x 8MM	1
18	1016491	IGNITER - OHV	1
19	1016544	SCREW, CROSS PAN HEAD SELF TAP, M5 x .8 x 12MM.....	1
20	1016561	CLAMP.....	1
21	1016587	CLAMP.....	1
22	1016503	WIRE, LEAD	1

G

6

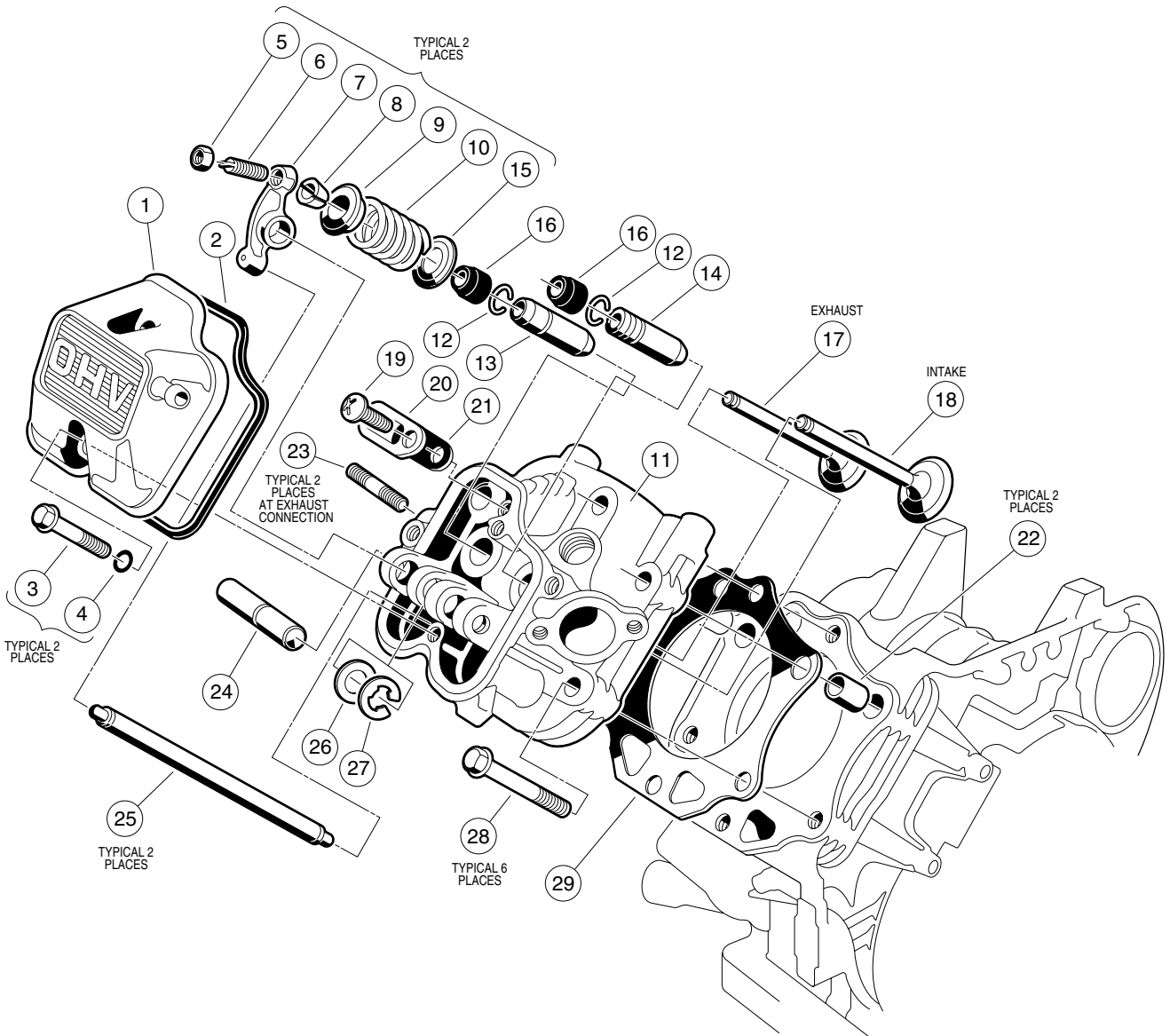


ENGINE

ITEM	PART NO.	DESCRIPTION	QTY
		1 2 3 4	
1	1016467	ASSEMBLY, OIL FILTER, OHV.....	1
2	1016502	BRACKET, OIL FILTER	1
3	1016457	BOLT, FLANGED HEX HEAD, M6 x 1 x 40MM	2
4	1016570	O-RING, OIL FILTER MOUNT.....	1
5	1016576	PLUG, DRAIN, FE 290.....	2
6	1016432	GASKET, DRAIN PLUG.....	2
7	1016498	SCREW, CROSS PAN HEAD, M6 x 1 x 12MM	6
8	1016484	COVER, PUMP	1
9	1016435	GASKET, OIL PUMP	1
10	1016473	PLATE, OIL PUMP	1
11	1016482-03	PUMP, OIL, AND ROTOR	1
12	1016429	SEAT, VALVE	1
13	1016537	BALL, STEEL, PRESS RELIEF	1
14	1016581	SPRING	1

G

6

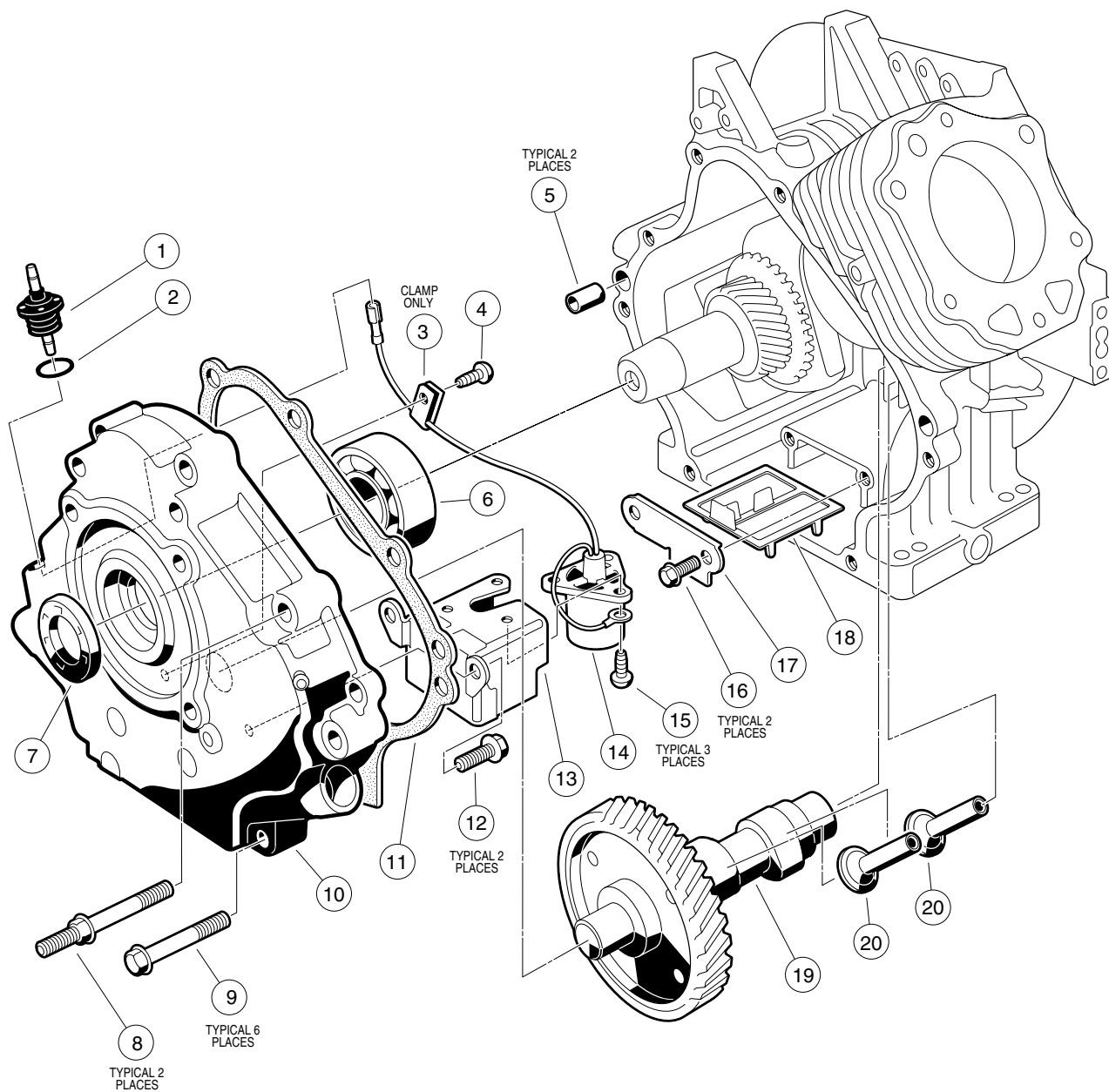


ENGINE

ITEM	PART NO.	DESCRIPTION	QTY
		1 2 3 4	
1	1016442	CASE, ROCKER	1
2	1016436	GASKET, ROCKER CASE	1
3	1016583	BOLT, FLANGED, M6 x 1 x 35MM	2
4	1016569	O-RING	2
5	1016545	NUT, HEX, M5 x .8	2
6	1016542	SCREW, STUD, M5 x .8.....	2
7	1016451	ARM , ROCKER	2
8	1016450	COLLET	2
9	1016449	RETAINER, VALVE SPRING	2
10	1016523	SPRING, ENGINE VALVE	2
11	1016431	ASSEMBLY, CYLINDER HEAD, OHV (INCLUDES ITEMS 12, 13 AND 14)	1
12	1016560	RING, SNAP	2
13	1016518	GUIDE, VALVE (EXHAUST).....	1
14	1016519	GUIDE, VALVE (INTAKE)	1
15	1016479	SEAT, SPRING	2
16	1016566	SEAL, VALVE	2
17	1016448	VALVE, EXHAUST	1
18	1016447	VALVE, INTAKE	1
19	1016544	SCREW, CROSS PAN HEAD SELF TAPPING, M5 x .8 x 12MM	1
20	1016474	PLATE.....	1
21	1016483	VALVE.....	1
22	1016563	PIN.....	2
23	1016489	BOLT, STUD, M8 x 1.25 x 29MM.....	2
24	1016452	SHAFT, ROCKER	1
25	1016471	ROD, PUSH	2
26	1016549	WASHER, FLAT, M12	1
27	1016517	CIRCLIP, TYPE-E	1
28	1016458	BOLT, FLANGED, M8 x 1.25 x 45MM	6
29	1016430	GASKET, HEAD	1

G

6

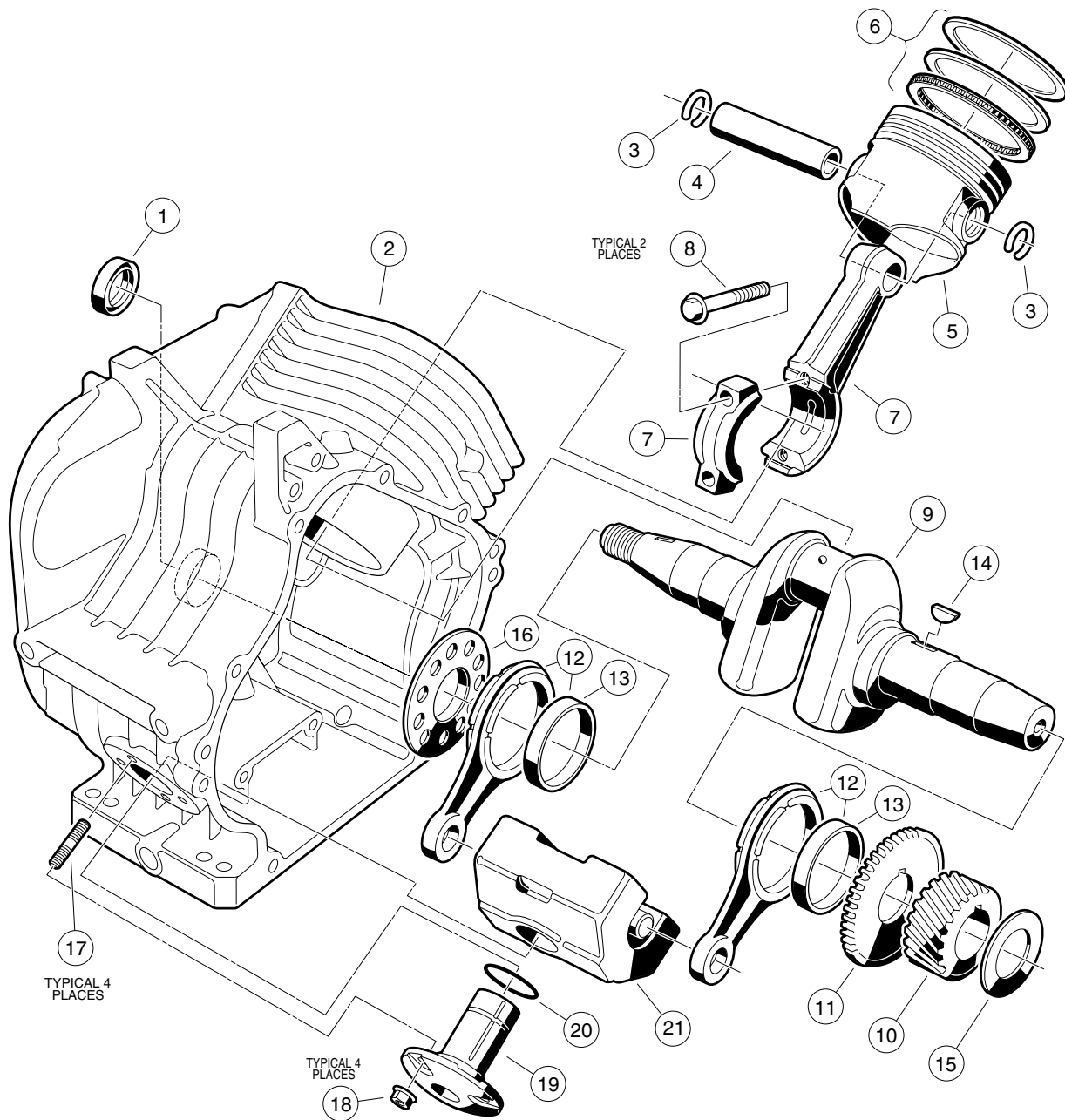


ENGINE

ITEM	PART NO.	DESCRIPTION	QTY
		1 2 3 4	
1	1016535	CONNECTOR, CORD	1
2	1016538	O-RING	1
3	1016506	CLAMP	1
4	1016544	SCREW, CROSS PAN HEAD SELF TAPPING, M5 x .8 x 12MM	1
5	1016564	PIN	2
6	1016565	BEARING, BALL	1
7	1016567	SEAL, CRANKSHAFT	1
8	1016584	BOLT, 2- ENDED, M8 x 1.25 x 69MM	2
9	1016458	BOLT, FLANGED, M8 x 1.25 x 45MM	6
10	1016520	COVER, CRANKCASE	1
11	1016446	GASKET, CRANKCASE COVER	1
12	1016456	BOLT, FLANGED, M6 x 1 x 12MM	2
13	1016510	BRACKET, OIL LEVEL SWITCH	1
14	1016494	SENSOR, OIL LEVEL	1
15	1016496	SCREW, CROSS PAN HEAD, M4 x .7 x 8MM	3
16	1016454	BOLT, FLANGED, M5 x .8 x 8MM	2
17	1016472	PLATE, OIL FILTER SCREEN	1
18	1016521	SCREEN, OIL FILTER	1
19	1016528	CAMSHAFT, COMPLETE	1
20	1016453	TAPPET	2

G

6



ENGINE

ITEM	PART NO.	DESCRIPTION	QTY
		1 2 3 4	
1	1016568	SEAL, OIL	1
2	1016529	CRANKCASE, COMPLETE, OHV.....	1
3	1016558	RING, SNAP	2
4	1016460	PIN, PISTON	1
5	1016459-01	PISTON, STANDARD	1
5	1016459-02	PISTON, .25MM OVERSIZED	1
5	1016459-03	PISTON, .50MM OVERSIZED	1
6	1016461-01	RING SET, PISTON, STANDARD	1
6	1016461-02	RING SET, PISTON, .25MM OVERSIZED	1
6	1016461-03	RING SET, PISTON, .50MM OVERSIZED	1
7	1016475-01	ASSEMBLY, CONNECTING ROD, STANDARD (INCLUDES 2 EACH OF ITEM 8)	1
7	1016475-02	ASSEMBLY, CONNECTING ROD, .50MM UNDERSIZED (INCLUDES 2 EACH OF ITEM 8)	1
8	1016509	BOLT, HEX HEAD M7 x 1 x 36MM	2
9	1016468	CRANKSHAFT, OHV (INCLUDES ITEMS 10, 11 AND 12)	1
10	1016533	GEAR, HELICAL	1
11	1016532	GEAR, SPUR.....	1
12	1016516	ASSEMBLY, CONNECTING ROD (INCLUDES ITEM 13).....	2
13	1016580	BEARING, PLAIN.....	2
14	1016562	KEY	1
15	1016550-01	SHIM, CRANKSHAFT, 1.13MM THICK.....	1
15	1016550-02	SHIM, CRANKSHAFT, 1.18MM THICK.....	1
15	1016550-03	SHIM, CRANKSHAFT, 1.23MM THICK.....	1
15	1016550-04	SHIM, CRANKSHAFT, 1.28MM THICK.....	1
15	1016550-05	SHIM, CRANKSHAFT, 1.33MM THICK.....	1
15	1016550-06	SHIM, CRANKSHAFT, 1.38MM THICK.....	1
15	1016550-07	SHIM, CRANKSHAFT, 1.43MM THICK.....	1
15	1016550-08	SHIM, CRANKSHAFT, 1.48MM THICK.....	1
15	1016550-09	SHIM, CRANKSHAFT, 1.53MM THICK.....	1
16	1016559	SPACER.....	1
17	1016541	BOLT, STUD, M6 x 1 x 22MM	4
18	1016547	NUT, FLANGED, M6 x 1.....	4
19	1016470	SHAFT, GUIDE COUNTER BALANCE	1
20	1016571	O-RING	1
21	1016469	WEIGHT, COUNTER BALANCE	1

G

6