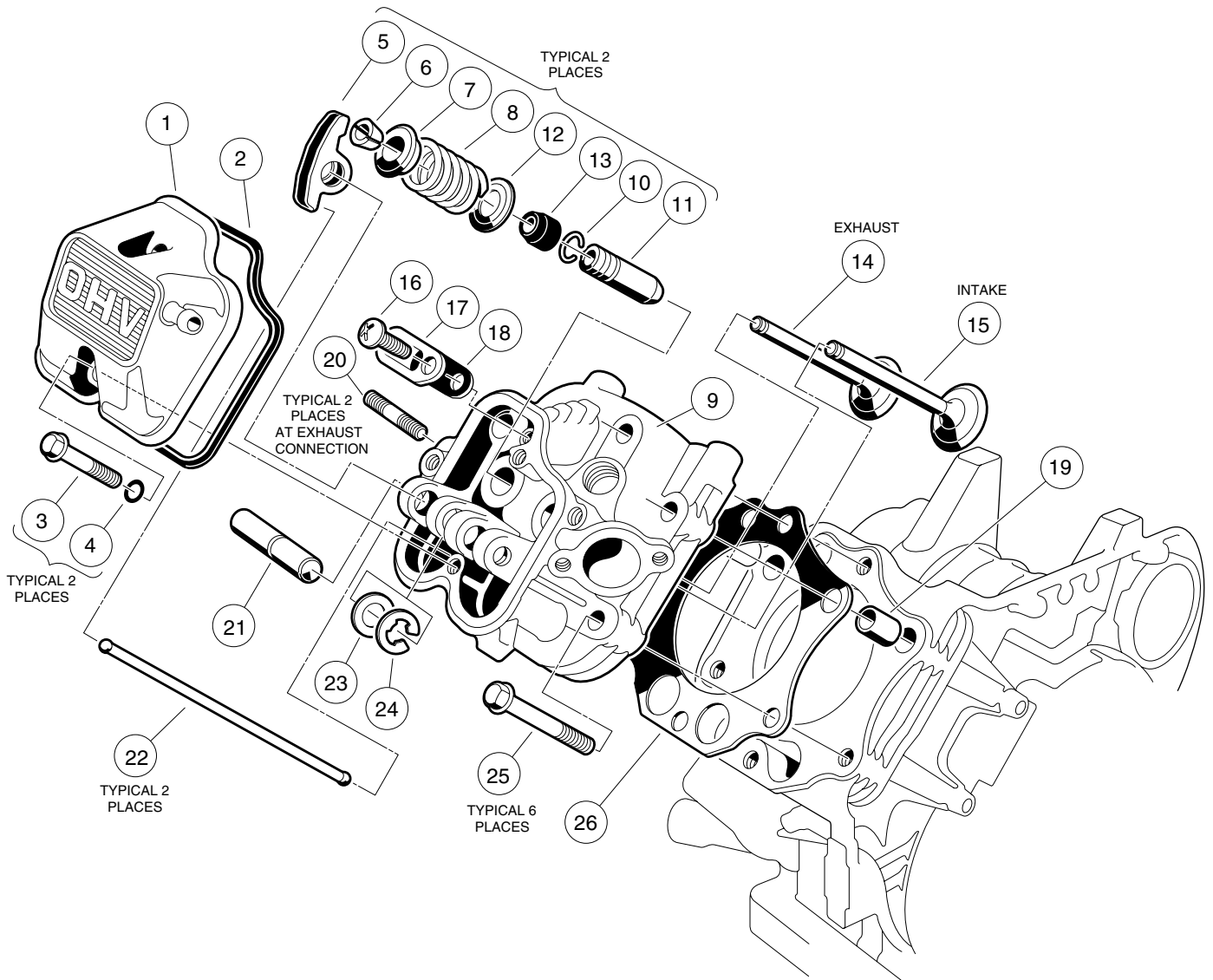


FE 350 ENGINE CARRYALL II PLUS AND VI

6

G

| ITEM | PART NO. | DESCRIPTION | QTY |
|------|------------|--|-----|
| | | 1 2 3 4 | |
| 1 | 1016467 | OIL FILTER | 1 |
| 2 | 1016502 | BRACKET, OIL FILTER | 1 |
| 3 | 1016457 | BOLT, FLANGED HEX HEAD, M6 x 1 x 40MM | 2 |
| 4 | 1017507 | PLUG | 2 |
| 5 | 1016570 | O-RING | 1 |
| 6 | 1016432 | GASKET, DRAIN PLUG | 2 |
| 7 | 1016576 | PLUG, DRAIN | 2 |
| 8 | 1017456 | SCREW, FLANGED HEX HEAD, M6 x 1 x 12MM | 6 |
| 9 | 1017460 | COVER, PUMP | 1 |
| 10 | 1016435 | GASKET, OIL PUMP | 1 |
| 11 | 1016473 | PLATE, OIL PUMP | 1 |
| 12 | 1016482-03 | PUMP, OIL, AND ROTOR | 1 |
| 13 | 1017458 | FILTER | 1 |
| 14 | 1016429 | SEAT, VALVE | 1 |
| 15 | 1016537 | BALL, STEEL, PRESSURE RELIEF | 1 |
| 16 | 1016581 | SPRING | 1 |

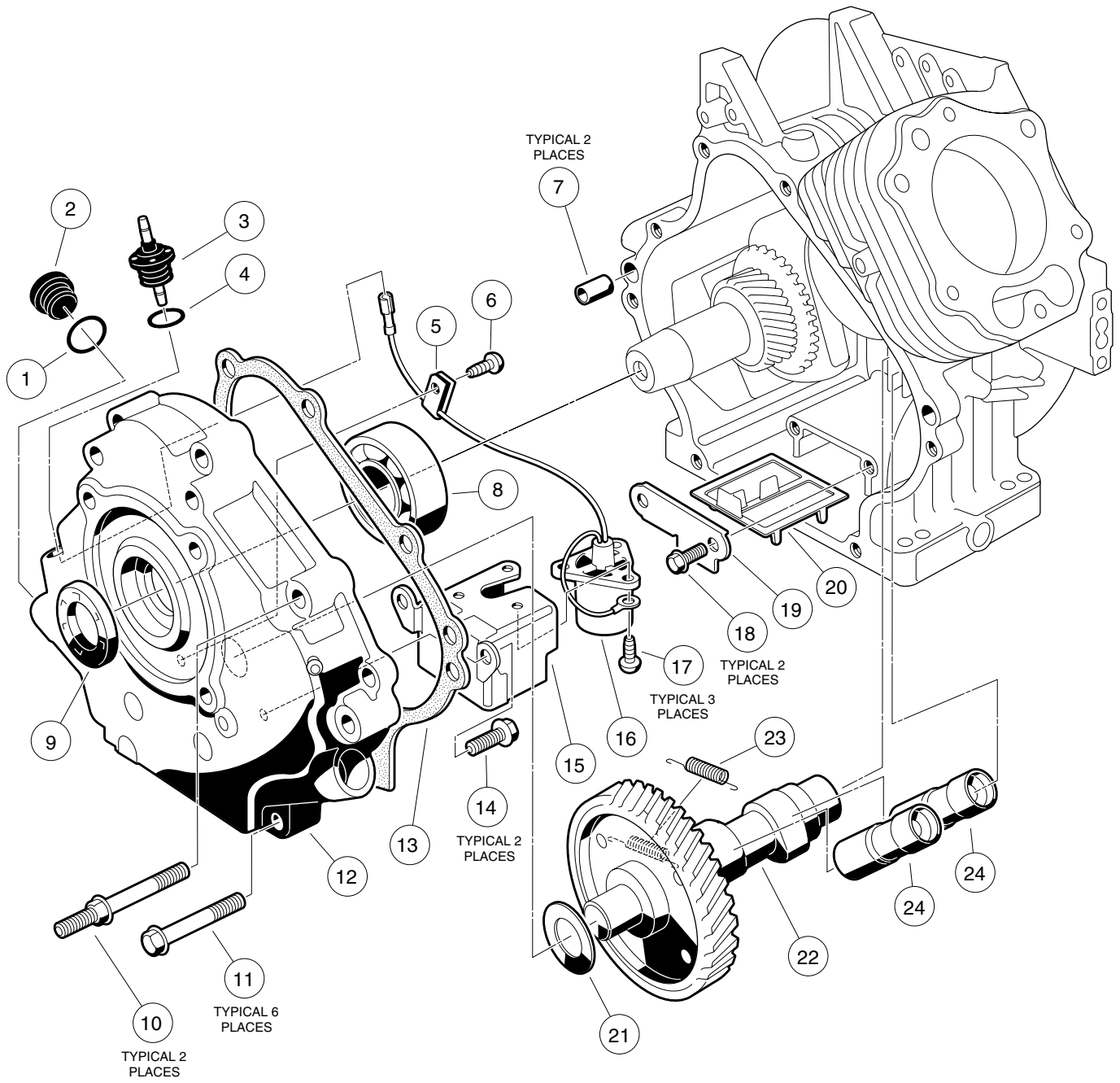


FE 350 ENGINE CARRYALL II PLUS AND VI

6

G

| ITEM | PART NO. | DESCRIPTION | QTY |
|------|----------|--|-----|
| | | 1 2 3 4 | |
| 1 | 1016442 | CASE, ROCKER | 1 |
| 2 | 1016436 | GASKET, ROCKER CASE | 1 |
| 3 | 1016583 | BOLT, FLANGED, M6 x 1 x 35MM | 2 |
| 4 | 1016569 | O-RING | 2 |
| 5 | 1017446 | ARM, ROCKER | 2 |
| 6 | 1016450 | COLLET | 4 |
| 7 | 1016449 | RETAINER, VALVE SPRING | 2 |
| 8 | 1017473 | SPRING, ENGINE VALVE | 2 |
| 9 | 1017435 | ASSEMBLY, CYLINDER HEAD, FE 350 (INCLUDES ITEMS 10 AND 11) | 1 |
| 10 | 1016560 | RING, SNAP | 2 |
| 11 | 1016519 | GUIDE, VALVE | 2 |
| 12 | 1016479 | SEAT, SPRING | 2 |
| 13 | 1016566 | SEAL, VALVE | 2 |
| 14 | 1017445 | VALVE, EXHAUST | 1 |
| 15 | 1017444 | VALVE, INTAKE | 1 |
| 16 | 1016544 | SCREW, CROSS PAN HEAD SELF-TAPPING, M5 x .8 x 12MM | 1 |
| 17 | 1016474 | PLATE | 1 |
| 18 | 1016483 | VALVE | 1 |
| 19 | 1016563 | PIN | 2 |
| 20 | 1016489 | BOLT, STUD, M8 x 1.25 x 29MM | 2 |
| 21 | 1016452 | SHAFT, ROCKER | 1 |
| 22 | 1017454 | ROD, PUSH | 2 |
| 23 | 1016549 | WASHER, FLAT, M12 | 1 |
| 24 | 1016517 | CIRCLIP, TYPE-E | 1 |
| 25 | 1016458 | BOLT, FLANGED, M8 x 1.25 x 45MM | 6 |
| 26 | 1017434 | GASKET, HEAD | 1 |

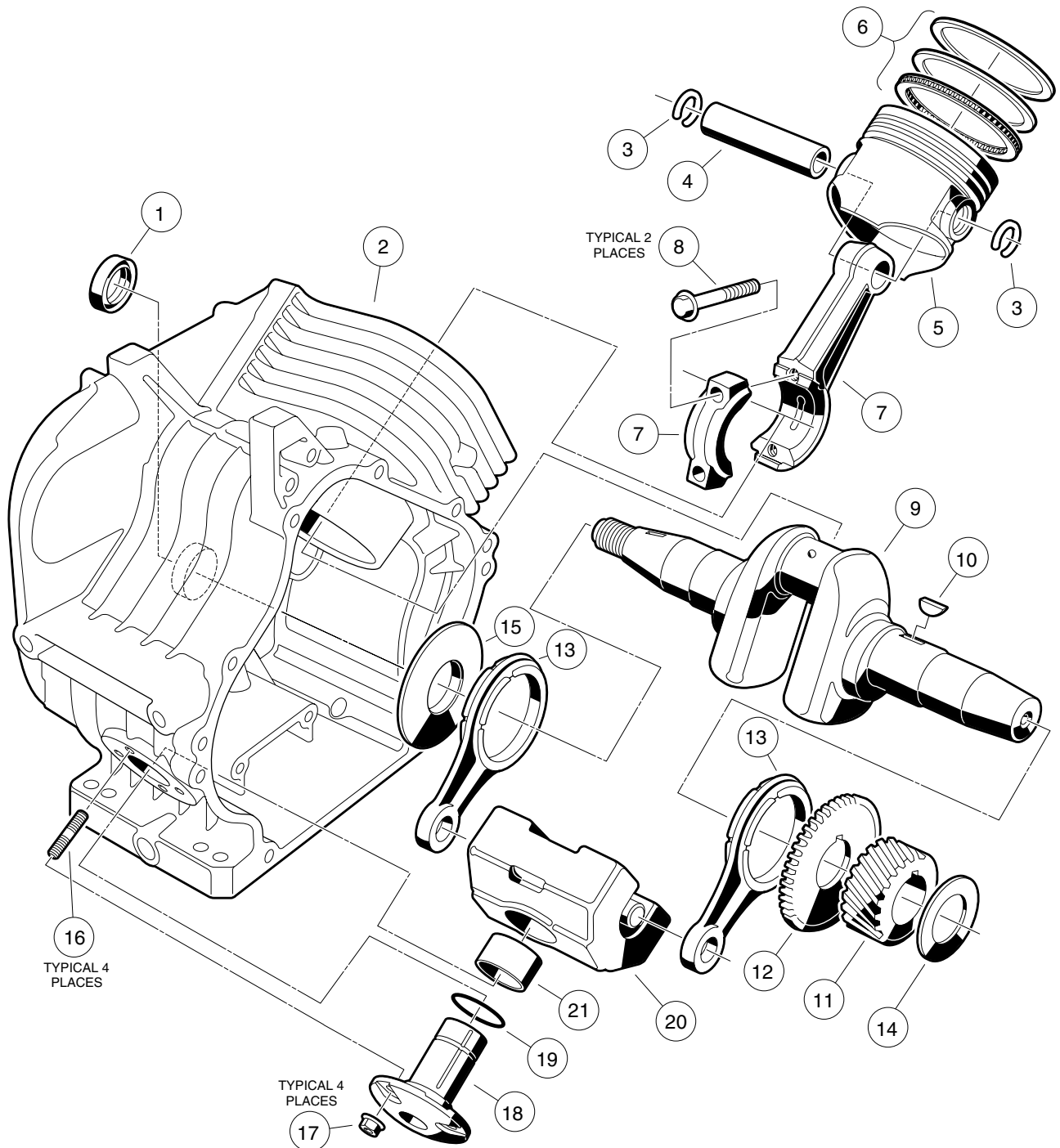


FE 350 ENGINE CARRYALL II PLUS AND VI

6

G

| ITEM | PART NO. | DESCRIPTION | QTY |
|------|------------|--|-----|
| | | 1 2 3 4 | |
| 1 | 1016538 | O-RING | 1 |
| 2 | 1017508 | PLUG | 1 |
| 3 | 1016535 | CONNECTOR, OIL SENDING UNIT | 1 |
| 4 | 1016538 | O-RING | 1 |
| 5 | 1016506 | CLAMP | 1 |
| 6 | 1016544 | SCREW, CROSS PAN HEAD SELF-TAPPING, M5 x .8 x 12MM | 1 |
| 7 | 1016564 | PIN | 2 |
| 8 | 1017487 | BEARING, CRANKSHAFT | 1 |
| 9 | 1017504 | SEAL, CRANKSHAFT | 1 |
| 10 | 1016584 | SCREW, 2-ENDED FLANGED, M8 x 1.25 x 69MM | 2 |
| 11 | 1017514 | BOLT, FLANGED, M8 x 1.25 x 45MM | 6 |
| 12 | 1017472 | COVER, CRANKCASE | 1 |
| 13 | 1017443 | GASKET, CRANKCASE COVER | 1 |
| 14 | 1017513 | BOLT, FLANGED, M6 x 1 x 12MM | 2 |
| 15 | 1016510 | BRACKET, OIL LEVEL SWITCH | 1 |
| 16 | 1016494 | SENSOR, OIL LEVEL | 1 |
| 17 | 1016496 | SCREW, CROSS PAN HEAD, M4 x .7 x 8MM | 3 |
| 18 | 1016454 | BOLT, FLANGED, M5 x .8 x 8MM | 2 |
| 19 | 1016472 | PLATE, OIL FILTER SCREEN | 1 |
| 20 | 1016521 | SCREEN, OIL FILTER | 1 |
| 21 | 1017518-01 | SHIM, 0.3MM THICK | A/R |
| 21 | 1017518-02 | SHIM, 0.4MM THICK | A/R |
| 21 | 1017518-03 | SHIM, 0.5MM THICK | A/R |
| 22 | 1017478 | CAMSHAFT, FE 350 (INCLUDES ITEM 23) | 1 |
| 23 | 1017511 | SPRING | 1 |
| 24 | 1017447 | LIFTER, HYDRAULIC | 2 |



FE 350 ENGINE CARRYALL II PLUS AND VI

6

G

| ITEM | PART NO. | DESCRIPTION | QTY |
|------|------------|--|-----|
| | | 1 2 3 4 | |
| 1 | 1017503 | SEAL, OIL | 1 |
| 2 | 1017479 | CRANKCASE, COMPLETE, FE 350 | 1 |
| 3 | 1017502 | RING, SNAP | 2 |
| 4 | 1017450 | PIN, PISTON | 1 |
| 5 | 1017449-01 | PISTON, STANDARD | 1 |
| 5 | 1017449-02 | PISTON, .50MM OVERSIZED | 1 |
| 6 | 1017451-01 | RING SET, PISTON, STANDARD | 1 |
| 6 | 1017451-02 | RING SET, PISTON, .50MM OVERSIZED | 1 |
| 7 | 1017457-01 | ASSEMBLY, CONNECTING ROD, STANDARD (INCLUDES 2 EACH OF ITEM 8) | 1 |
| 7 | 1017457-02 | ASSEMBLY, CONNECTING ROD, .50MM UNDERSIZED) (INCLUDES 2 EACH OF ITEM 8) | 1 |
| 8 | 1017512 | BOLT, HEX HEAD, M7 x 1 x 36MM | 2 |
| 9 | 1017452 | CRANKSHAFT, COMPLETE, FE 350 (INCLUDES ITEMS 10 - 13) | 1 |
| 10 | 1016562 | KEY | 1 |
| 11 | 1016533 | GEAR, HELICAL | 1 |
| 12 | 1016532 | GEAR, SPUR | 1 |
| 13 | 1017457 | ROD | 2 |
| 14 | 1017733-01 | SHIM, CRANKSHAFT, 1.18MM THICK | A/R |
| 14 | 1017733-02 | SHIM, CRANKSHAFT, 1.25MM THICK | A/R |
| 14 | 1017733-03 | SHIM, CRANKSHAFT, 1.32MM THICK | A/R |
| 14 | 1017733-04 | SHIM, CRANKSHAFT, 1.39MM THICK | A/R |
| 14 | 1017733-05 | SHIM, CRANKSHAFT, 1.46MM THICK | A/R |
| 14 | 1017733-06 | SHIM, CRANKSHAFT, 1.53MM THICK | A/R |
| 14 | 1017733-07 | SHIM, CRANKSHAFT, 1.60MM THICK | A/R |
| 14 | 1017733-08 | SHIM, CRANKSHAFT, 1.67MM THICK | A/R |
| 14 | 1017733-09 | SHIM, CRANKSHAFT, 1.74MM THICK | A/R |
| 14 | 1017733-10 | SHIM, CRANKSHAFT, 1.11MM THICK | A/R |
| 14 | 1017733-11 | SHIM, CRANKSHAFT, 1.81MM THICK | A/R |
| 15 | 1017502 | SPACER | 1 |
| 16 | 1016541 | BOLT, STUD, M6 x 1 x 22MM | 4 |
| 17 | 1016547 | NUT, FLANGED, M6 x 1 | 4 |
| 18 | 1016470 | SHAFT, GUIDE COUNTERBALANCE | 1 |
| 19 | 1016571 | O-RING | 1 |
| 20 | 1017453 | WEIGHT, COUNTERBALANCE (INCLUDES ITEM 21) | 1 |
| 21 | 1017510 | BEARING | 1 |